

Since 1907

**Arthur's**

Arthur's Hardware  
Orchard Park  
www.arthurshardware.com

BEHIND EVERY PROJECT IS A

**True Value®**

**Scotts®**

**15<sup>99</sup>** sale price  
**-5<sup>00</sup>** mail-in rebate\*

**10<sup>99</sup>**  
FINAL PRICE

**5,000-Sq.-Ft. Turf Builder Lawn Food**  
Feeds and strengthens your lawn. Apply any season to any grass. Kid and pet friendly. Water Smart, improves lawn's ability to absorb water and nutrients. For northern lawns. L 153 579 1  
**15,000-Sq.-Ft. Turf Builder Lawn Food, 39.99 - \$12 mail-in rebate\* = 27.99 final price**  
L 153 580 1

\*Limit 4 bags per household. Consumer responsible for taxes.



**3<sup>99</sup>**

reg. 4.99  
**30-Oz. Ready-to-Use Weed & Grass Killer**  
One shot kills weeds and grasses, roots and all. L 638 767 F12



**SAVE 20%**

**15<sup>99</sup>**

reg. 23.99  
**American Flag Set**  
2½-ft. x 4-ft. banner with a 5-ft. wood pole. T 535 813 B6



**SAVE \$8**

**4<sup>49</sup>**

reg. 5.99  
**Patriotic Soap Soundz**  
Plays a patriotic melody with every use. 3 different melodies per bottle. W 169 796 F9



**SAVE 25%**

**2<sup>69</sup>**

reg. 3.99  
**Black Edging Trim**  
3½-in. x 20-ft. L 244 525 B24



**SAVE 32%**

**9<sup>99</sup>**

reg. 14.99  
**5.625-Lb. Weed Preventer**  
Stops weeds before they start, prevents weeds up to 3 months. L 689 867 B4

**SAVE \$5**



**6<sup>99</sup>**

reg. 8.99  
**20-Lb. Wild Bird Food**  
Good general-purpose mix with vitamins and minerals. L 501 272 1

**SAVE 22%**



**HOT DEAL!**

**79¢**

**33-In. Tomato Cage**  
3 rings of galvanized steel support plants. L 316 737 F25  
Plant not included.  
**42-In. Tomato Cage, 1.59**  
L 302 664 F25  
**54-In. Tomato Cage, 2.49**  
L 319 822 F25



**Get a free quart of EasyCare® Ultra Premium Satin Paint – See page 8 for details**



**4<sup>99</sup>** sale price  
**-1<sup>00</sup>** mail-in rebate\*

**3<sup>99</sup>**  
 FINAL PRICE

WHEN YOU BUY 5 OR MORE BAGS

**2-Cu.-Ft. Nature Scapes Mulch** Choose classic black, deep forest brown or sierra red. L 168 660, 659, 658 B60

\*Limit 15 per household.  
 Consumer responsible for taxes.



**4<sup>99</sup>** sale price  
**-2<sup>00</sup>** mail-in rebate\*\*

**2<sup>99</sup>**  
 FINAL PRICE

WHEN YOU BUY 2 OR MORE BAGS

**Cu.-Ft. Flower & Vegetable Garden Soil** Water-absorbent formula helps keep young plants from drying out. L 726 398 60

\*\*Limit 10 per household.  
 Consumer responsible for taxes.

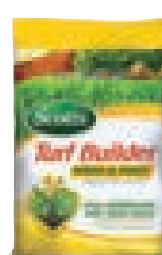


HOT DEAL!

**13<sup>33</sup>**

reg. 15.99  
**5,000-Sq.-Ft. Weed & Feed** Controls more than 50 common weeds. L 532 616 B100  
**Only 39.99 when you buy 3 bags to cover 15,000 sq. ft.**

Scott's



**19<sup>99</sup>** sale price  
**-5<sup>00</sup>** mail-in rebate\*\*\*

**14<sup>99</sup>**  
 FINAL PRICE

**5,000-Sq.-Ft. Zero P Turf Builder Plus 2 Weed Control** Kills weeds and feeds your lawn. L 119 506 B40  
**15,000-Sq.-Ft., 49.99 - 12.99 mail-in rebate = 37.99 final price** L 123 759 35  
 \*\*\*Limit 4 bags per household.  
 Consumer responsible for taxes.

Scott's



**14<sup>99</sup>** sale price  
**-4<sup>00</sup>** mail-in rebate†

**10<sup>99</sup>**  
 FINAL PRICE

**3.75-Lb. Turf Builder EZ Seed** Special blend of grass seed, premium fertilizer and patented super-absorbent planting mix. L 105 578 B6  
 †No limit. Consumer responsible for taxes.



**1<sup>99</sup>**

reg. 2.49  
**40-Lb. Bag Garden Magic Top Soil** Blend of peat and sand loosens heavy soils and adds to moisture retention. L 596 117 B60

**SAVE 20%**

# SAVE ON SUPPLIES TO MAKE YOUR YARD OR GARDEN THRIVE

**SAVE 50%**

**99¢**

reg. 1.99  
**12-Pk. Jiffy Round Pots** Biodegradable. Provides faster growth and more vigorous plants. L 463 240 B44



**SAVE 42%**

**1<sup>99</sup>**

reg. 3.49  
**4-Pk. 2½-Sq.-In. Peat Strips** Grows 32 plants. L 462 567 B20



**SAVE 28%**

**4<sup>99</sup>**

reg. 6.99  
**36-Cell Plant Seed Starter Tray** 11-in. x 22-in. all-natural fiber tray with clear greenhouse dome. Ideal for starting tomatoes and cucumbers. L 131 988 B16



STARTING AT  
**99¢ SALE**  
**Garden Seeds**  
 Prices range from 99¢ to 2.49



**4<sup>99</sup>**

reg. 6.99  
**2-Gal. Watering Can** In assorted colors. L 119 944 B12

**SAVE 28%**

**3<sup>99</sup> SALE**

**8-Qt. Potting Mix** Blend of composted bark, sphagnum peat moss and perlite. Enriched with Miracle-Gro plant food. L 462 606 F6



Scott's

**9<sup>99</sup>**

reg. 12.99  
**4.5-Lb. All-Purpose Plant Food** Plant food lasts up to 3 months. L 378 353 B6

**SAVE 23%**



**7<sup>99</sup> SALE**

**4-Lb. All-Purpose Plant Food** Water-soluble plant food feeds through the roots and the leaves. L 141 987 B6



GC2

**True Value**  
 Pricing and savings may vary by location.

**3<sup>99</sup>**

reg. 6.99

**3-Ft. x 25-Ft. Landscape Fabric**  
Easy to install. Prevents weeds while permitting water and air to flow through. L 812 626 B42

**3-Ft. x 50-Ft., 4.99**, reg. 9.99

**Save 50%.** L 812 634 B27

**3-Ft. x 100-Ft., 8.99**, reg. 17.99

**Save 50%.** L 812 612 B14

**SAVE 42%**

**11<sup>99</sup>**

reg. 16.99

**5.62-Lb. Weed Preventer + Plant Food**

Includes plant food. Covers 900 sq. ft. L 104 395 B4

**SAVE \$5**

**19<sup>99</sup>**

reg. 27.99

**16-Lb. Weed Preventer**

Covers 2,560 sq. ft. Apply anytime. L 818 115 B39

**SAVE \$8**

**Preen®**

**21<sup>99</sup>**

reg. 34.99

**16-Lb. Weed Preventer + Plant Food**

L 104 396 B4

**SAVE \$13**



**17<sup>99</sup>** sale price  
**-6<sup>00</sup>** mail-in rebate\*

**11<sup>99</sup>** FINAL PRICE

**1.33-Gal. Grass & Weed Killer**  
Easy-to-use extendable wand. L 829 335 B4

\*Limit 2 per household. Consumer responsible for taxes.



**Scotts**

**19<sup>99</sup>** sale price  
**-5<sup>00</sup>** mail-in rebate\*\*

**14<sup>99</sup>** FINAL PRICE

**5,000-Sq.-Ft. Grub Killer**  
One application kills and prevents grubs all season. L 138 976 B48

\*\*Limit 3 per household. Consumer responsible for taxes.



AS SEEN ON  
**TV**

**17<sup>99</sup>** SALE

**50-Ft. Pocket Hose Ultra**  
3 times stronger. Equipped with tight seal technology. Expands with water pressure. L 177 686 B12



**11<sup>99</sup>**

reg. 19.99

**32-Oz. Deer Off Spray**  
Ready to use. Covers up to 500 sq. ft. All natural. Safe and effective. Weather-resistant animal repellent. L 730 481 B12

**SAVE \$8**



**10% off** with coupon  
**Any Duncan White Invite Deer Food Plot Item**

Limit one coupon per customer. Valid at Arthur's True Value store. Expires 5/25/14.

**True Value.**



**79¢** SALE

**11.75-Oz. Suet Cakes**

A complete meal for wild birds. L 689 919 F12



**1<sup>29</sup>**

reg. 2.49

**8-Oz. Instant Nectar Dry Mix**  
Makes 48 oz. of hummingbird nectar. L 452 607 B24

**SAVE 48%**



**3<sup>99</sup>**

reg. 5.99

**Lantern Style Hummingbird Bird Feeder**  
Large 18-oz. capacity. Features a reflective, clear plastic feeding bottle, a shatterproof base with 3 feeding stations. L 541 506 B6

**SAVE 33%**



**10<sup>99</sup>**

reg. 18.99

**20-Lb. Black Oil Sunflower Bird Seed**  
Good source of protein, vitamins and minerals. L 106 363 1

**SAVE 42%**



**Like us or follow us...**



GC3



YOUR CHOICE

**2<sup>79</sup>**  
SALE

Gal. 4 x 1 Liquid Chlorine  
Disinfects swimming pool  
water. T 570 069 F4

Lb. Pool Shock 'N Swim  
Kills bacteria and organic  
contaminants. T 795 502 F18



**hth**  
HOT DEAL!  
**6<sup>49</sup>**

reg. 7.99  
Gal. AlgaeGuard 10  
Helps prevent algae growth.  
T 580 073 F4



**hth**  
**6<sup>49</sup>**

reg. 8.99  
50-Lb. Pool Filter Sand  
For use in all sand filters.  
T 103 165 B56

SAVE  
27%



SAVE  
22%

**hth**  
**6<sup>99</sup>**

reg. 8.99  
3-Way Pool Test Kit  
Performs up to 100 tests per kit. T 277 418 B6



**hth**  
**4<sup>49</sup>**

reg. 5.99  
Leaf Skimmer  
Skims debris off water surfaces. T 162 633 B6

SAVE  
25%



**hth**  
HOT DEAL!  
**26<sup>99</sup>**

reg. 29.99  
4.81-Lb., 3-In. Super Chlorinating Tablets  
Sanitizes pool water. T 142 901 F6



**hth**  
**3<sup>99</sup>**

reg. 4.99  
Thermometer  
Accurate and easy to read. T 162 638 B8

SAVE  
20%



**hth**  
**13<sup>99</sup>**  
SALE

5-Lb. Shock 'N Swim  
Kills bacteria and  
organic contaminants.  
T 535 494 F6



**hth**  
**10<sup>99</sup>**

reg. 13.99  
Gal. Clarifier  
Makes dull water  
sparkling clear  
without affecting  
pH. T 580 241 F4

SAVE  
21%



**hth**  
**6<sup>49</sup>**

reg. 11.99  
Curved Wall Brush  
Helps clean pool walls. Good for  
all surfaces. T 162 637 B6

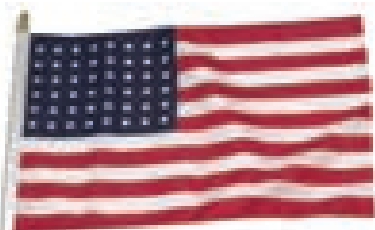
SAVE  
45%



**hth**  
**7<sup>49</sup>**

reg. 9.99  
5-Lb. Alkalinity Plus  
Raises alkalinity in pool  
water. Helps maintain pH  
balance. Prevents corrosion.  
T 587 832 F6

SAVE  
25%



**49¢**  
SALE

4-In. x 6-In. US Hand Flag  
Includes cup/canister. T 127 304 F48  
US Hand Flag, 79¢ T 127 303

**14<sup>99</sup>**

reg. 19.99  
3-Ft. x 5-Ft. Cotton Replacement Flag  
Strong duck heading and brass  
grommets. Fits all standard flag poles.  
T 535 742 B3

SAVE  
\$5



**19<sup>99</sup>**

reg. 29.99  
3-Ft. x 5-Ft. Nylon  
Replacement Flag  
100% nylon. Durable and  
lightweight. T 535 763 B3

SAVE  
\$10



GC4

**True Value**  
Pricing and savings may vary by location.

TXZ



**3<sup>49</sup>**

**SAVE  
22%**

reg. 4.49  
**30-Qt. Styrofoam Ice Chest Cooler**  
With molded side carry handles. W  
472 241 F24



**6<sup>99</sup>**

**SAVE  
30%**

reg. 9.99  
**17-Gal. Utility Tub**  
Holds iced beverages, toys, tools and  
more. 22-in. x 22-in. x 16¼-in.  
W 123 951 F6



**24<sup>99</sup>**

**SAVE  
\$5**

reg. 29.99  
**48-Qt. Cooler**  
Swing-up side handles.  
76-can capacity. T 164 789 B2



**14<sup>99</sup>** **SALE**

**Soft Side Cooler Tote**  
30-can capacity. For shopping,  
travel and more. Extra-wide opening  
for easy loading. Convenient mesh  
interior pocket. Assorted colors.  
T 174 958 B6



**9<sup>99</sup>**

**SAVE  
28%**

reg. 13.99  
**2-Pk. Pink Flamingos**  
Each stands over 10-in. tall. With  
black-tipped beaks and curved necks.  
T 107 411 B6

## ENJOY THE OUTDOORS WITH THESE GREAT DEALS



**8<sup>99</sup>**

**SAVE  
30%**

reg. 12.99  
**Quad Chair with Armrests**  
Features a beverage holder and  
handy carrying case. Polyester  
with a steel frame. T 823 656 B6



**YOUR CHOICE  
14<sup>99</sup>**

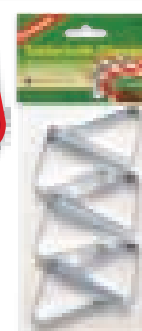
**SAVE  
25%**

reg. 19.99  
**Web Folding Chair** With white powdercoated steel frame  
and blue webbing. 220-lb. weight capacity. T 144 096 B6  
**Oversized Mesh Armchair** With armrest, beverage holder  
and handy carrying case. 275-lb. capacity. T 143 562 B4

**1<sup>99</sup>**

**SAVE  
50%**

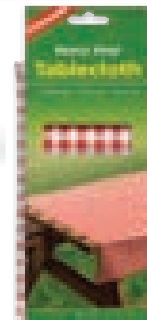
reg. 3.99  
**6-Pk. Tablecloth Clamp**  
Rust-resistant, steel  
tablecloth clamp.  
L 142 296 B12



**3<sup>69</sup>**

**SAVE  
26%**

reg. 4.99  
**Heavyweight Vinyl  
Tablecloth**  
54-in. x 72-in. Easy to  
wipe clean. L 142 307 B12



**99¢**

**SAVE  
44%**

reg. 1.79  
**18-Ct., 16-Oz.  
Plastic Party Cups**  
L 821 795 B24



**YOUR CHOICE**

**1<sup>59</sup>**

reg. 2.49  
**24-Ct. Clear Plastic Cutlery**  
Assorted. L 126 979 B24  
**24-Ct. Clear Plastic Forks**  
L 127 258 B24  
**24-Ct. Clear Plastic Spoons**  
L 132 936 B24



**SAVE  
36%**

**More mowers online @ TrueValue.com**

GC5

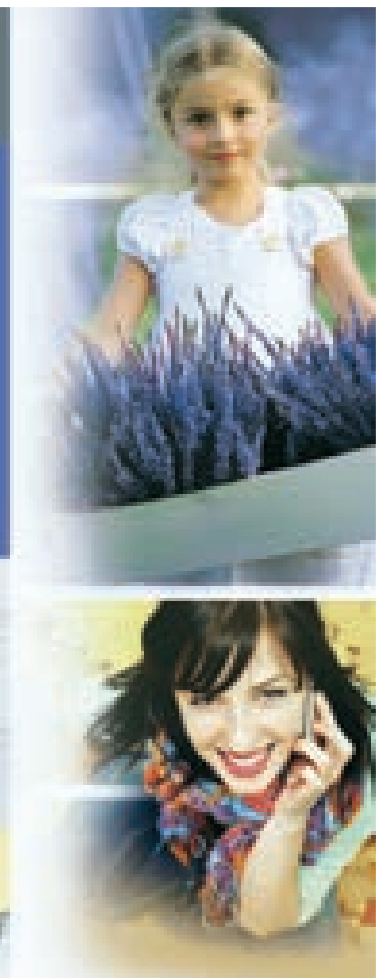
# Visit our new Color Center

## WHERE INSPIRATION COMES TO LIFE<sup>SM</sup>

Get inspired by color. Our new Paint Center is designed to help you choose colors that reflect the way you live. You'll find thousands of colors in coordinating palettes in one inspiring location.

- Peel 'n Place™ Color Cards
- Project tips
- Designer inspiration
- Expert advice

[TrueValuePaint.com](http://TrueValuePaint.com)



 <div data-bbox="188 1342 298 1508"> <p><b>SAVE 42%</b></p> </div> <p><b>15<sup>99</sup></b></p> <p>reg. 27.99  <b>Half Gal. Wet &amp; Forget Stain Remover</b>  Removes moss, mold and mildew.  Contains no bleach. Safe on any  outdoor surface. K 112 777 B6  <b>Gal. Wet &amp; Forget Stain Remover,</b>  <b>19.99</b> Reg. 37.99. <b>Save 47%.</b>  K 112 778 B4</p>	 <div data-bbox="519 1363 630 1529"> <p><b>SAVE 25%</b></p> </div> <p><b>4<sup>29</sup></b></p> <p>reg. 5.79  <b>Gal. Deck Wash</b>  VOC 0%. K 776 107 F4</p>	 <div data-bbox="807 1363 917 1529"> <p><b>SAVE 28%</b></p> </div> <p><b>4<sup>29</sup></b></p> <p>reg. 5.99  <b>8-In. Wide Deck Scrub Broom</b>  W 566 085 B6  </p>	 <div data-bbox="1294 1363 1404 1529"> <p><b>SAVE 22%</b></p> </div> <p><b>YOUR CHOICE 20<sup>99</sup></b></p> <p>reg. 26.99  <b>Gal. Premium Wood Finish &amp; Preservative</b>  Choose natural, redwood or  cedar. K 861 016, 860 954, 935 B4</p>	 <p><b>3M 3<sup>99</sup></b></p> <p><b>SALE</b>  <b>.94-In. x 60-Yd. Painter's Tape</b>  Removes cleanly without adhesive  transfer or surface damage.  P 865 337 B36  <b>1.41-In. x 60-Yd. Painter's Tape, 5.99</b>  P 865 345 B24  <b>1.88-In. x 60-Yd. Painter's Tape, 7.99</b>  P 865 352 B18</p>	 <p><b>8<sup>99</sup></b></p> <p><b>SALE</b>  <b>32-Oz. Windex Outdoor Cleaner</b>  Spray on and let dry  for a streak-free shine.  Window and surface  concentrated cleaner.  W 604 006 B8</p>
--	--	---	--	--	--

**For project tips and advice go to [TrueValueProjects.com](http://TrueValueProjects.com)**

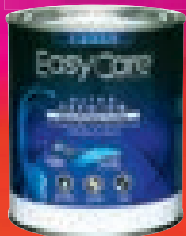
A9

# FREE QUART OF PAINT

Get a free quart of EasyCare® Ultra Premium Satin Paint while supplies last

Valid at participating True Value stores on May 17, 2014 only. Free quart offer applies to satin finish only (skus #259082, 259074, 259096 & 859543) while supplies last. Most colors available for tinting. Other exclusions may apply. See store for details. Limit 1 quart per household. Must present coupon to redeem free quart. Do not duplicate. Void where prohibited. No cash value. Taxes may apply based on location of sale. Average availability 40 quarts per store.

SATURDAY,  
MAY 17  
ONE DAY  
ONLY!



True Value



**23<sup>99</sup>**  
and up  
EasyCare® Ultra Premium  
with Paint/Primer

- One-step paint and primer—saves time, effort and money
- Mold- and mildew-resistant coating



**26<sup>99</sup>**  
and up  
WeatherAll® Ultra  
Premium

- Excellent coverage plus easy soap and water cleanup
- Made to stand up to all weather elements

## PICK THE COLOR AND CREATE THE ROOM OF YOUR DREAMS

**9<sup>99</sup>**

reg. 12.99  
2-In. Angle Sash & Trim Brush  
No-drag application. For interior or exterior use.  
P 364 916 B6

SAVE  
23%



**1<sup>99</sup>**  
SALE

10.1-Oz. Alex Plus Caulk  
Paintable caulk with silicone for interior or exterior use.  
P 205 740 B12



YOUR CHOICE

**3<sup>49</sup>**  
SALE

9-In. Roller Covers  
Choose ¼-in., ⅜-in. or ½-in. Lint-free cover is double cleaned to eliminate fiber shedding. Use on interior or exterior surfaces.  
P 364 346, 484, 496 B15



**12<sup>99</sup>**  
SALE

4-Ft. x 15-Ft. Canvas Drop Cloth  
Washable and reusable cloth is perfect for painting and cleaning.  
P 156 767, 765 B12  
9-Ft. x 12-Ft. Canvas Drop Cloth, 19.99  
For painting and cleaning.  
P 156 765 B6



MASTER  
TRADESMAN

**7<sup>99</sup>**

12-Oz. Leak Seal Spray  
A rubberized protective coating designed to fill and seal leaks and cracks. Black, clear, white, aluminum or brown.  
P 152 002; 165 117, 119, 120, 121 B6

SAVE  
20%  
OR MORE



**6<sup>99</sup>**  
SALE

1.41-In. x 60-Yd. Painter's Tape  
Creates a micro barrier, sealing the tape edges.  
P 119 580 B10



A8 True Value  
Pricing and savings may vary by location.





# \$199

## 14½-In. Smokey Mountain Cooker™

- Plated-steel cooking grate
- 286-sq.-in. cooking space
- Built-in thermometer
- Porcelain-enameled water pan

Model #711001 T 172 957 1

## 18½-In. Smokey Mountain Cooker™, \$299

- Heavy, bright nickel-plated 18½-in. cooking grates

Model #721001 T 105 360 1

## 22½-In. Smokey Mountain Cooker™, \$399

- Heavy, bright nickel-plated 22½-in. cooking grates

Model #731001 T 105 363 1



# \$349

## Performer Platinum 22½-In. Charcoal Grill

- 363-sq.-in. cooking area
- Electronic Touch-N-Go™ gas ignition system
- 2 Char-Basket™ charcoal holders
- Also available in crimson and copper

Model #1481001, 1483001, 1482001

T 156 578, 172 932, 931 1

LP tank not included. Some assembly required.

**The Arthur's Advantage**  
with the purchase of any Weber grill, you receive:

- Free assembly and local delivery
- Weber's best pricing
- Helpful trained sales staff
- Certified Weber Service Center

Full line of Weber accessories available.



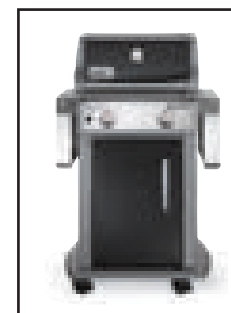
# \$399

## Spirit E-210 LP Gas Grill

- 2 stainless steel burners
- Porcelain-enameled Flavorizer bars
- 26,500 BTUs
- 360-sq. in. cooking area
- Model #46110001

T 156 775 1

Some assembly required.  
LP tank not included.



# 5<sup>99</sup>

## 10-Pk. Aluminum Drip Pan

8.5-in. x 6-in. T 824 597 B10



# 2<sup>49</sup>

## Weber Grill 'N Spray

Non-flammable cooking spray.  
Model #98360 T 825 572 B12



# 2<sup>99</sup>

## 18-Oz. BBQ Sauce

Original, hickory, Kick n' Spicy, or honey BBQ flavors. Model #2009146, 2009147, 2009148, 2009149  
T 157 056, 058, 059, 060 F6



# 2<sup>99</sup>

## 4-Oz. Firespice Trial Size Gravity Feed Kits

Single use tray filled with flavored wood chips. Choose hickory, mesquite, cherry, apple or pecan.  
Model #17904, 17910, 17911, 17912, 17913  
T 157 801, 802, 804, 805, 806 F10



# 14<sup>99</sup>

## Chimney Rapidfire Starter

Cone bottom for a fast-starting fire.  
Model #7416 T 825 192 B4

# 2<sup>69</sup>

## Utility Lighter

Child-resistant lighter in assorted colors. T 142 379 F12



# 3<sup>29</sup>

## Qt. Charcoal Lighter Fluid

A perfect complement to charcoal briquettes for any barbecue. T 112 334 B12



# 3<sup>49</sup>

reg. 4.99

## 6-Lb. Lava Rock

Ideal for all gas grills that use volcanic rock. T 296 304 B6



# 19<sup>99</sup>

## Blue Rhino Propane Exchange

Bring in your empty 20-lb. propane tank to Arthur's and we will exchange it for a full tank. Quick and easy, no waiting.



GC8

**True Value**  
Pricing and savings may vary by location.



# \$449

## Spirit® S-210 LP Grill

- 26,500 BTUs
- 2 stainless steel burners
- 450-sq.-in. total cooking area
- Porcelain-enameled cast iron cooking grates
- Porcelain-enameled Flavorizer® bars
- Stainless steel folding side tables

Model #46100001

T 156 774 1

Limited warranty. LP tank not included. Assembly required.



# \$599

## Spirit® SP-320 LP Gas Grill

- 32,000 BTUs
- 3 stainless steel burners
- 12,000-BTU side burner
- 529-sq.-in. total cooking area
- Stainless steel cooking grates
- Porcelain-enameled Flavorizer® bars

Model #46700401

T 156 779 1

Limited warranty. LP tank not included. Assembly required.



# \$699

## Genesis® E-310 LP Gas Grill

- 38,000 BTUs
- 3 seamless stainless steel burners
- 637-sq.-in. total cooking area
- Electronic ignition system
- Porcelain-enameled Flavorizer® bars

Model #6511001

T 129 828 1

Limited warranty. LP tank not included. Assembly required.



**GENESIS**  
PREMIUM

# \$849

## Genesis® EP-330 LP Gas Grill

- 38,000 BTUs
- 3 stainless steel burners
- 12,000-BTU flush-mounted side burner
- 10,000-BTU Sear Station® burner
- 637-sq.-in. total cooking area
- Electronic ignition system
- Porcelain-enameled cast iron cooking grates
- Stainless steel working areas

Model #6535301

T 172 920 1

Limited warranty. LP tank not included. Assembly required.



Shown in  
Smoke

Crimson	Black	Green	Copper
172919	129833	129839	129841
Model	Model	Model	Model
#6533301	#6531301	#6537301	#6532301

D3 **TrueValue**  
Pricing and savings may vary by location.

More to choose at our Weber Shop @ [TrueValue.com](http://TrueValue.com)



# 129<sup>95</sup>

## FS 38 Trimmer

A great entry level trimmer. Lightweight compared to its power output. With a 15-in. cutting width. With an ergonomic loop handle and curved shaft.

# 159<sup>95</sup>

## FS 40 C-E Trimmer

Entry-level trimmer is light-weight, balanced in hand and features a curved shaft for exceptional handling. Ideal for home use. With Easy2Start™ technology.

# 199<sup>95</sup>

## FS 56 RC-E Trimmer

Features a high-performance, fuel-efficient engine that runs clean and smooth. Keeps the weeds at bay, thanks to its AUTOCUT® cutting head. With Easy2Start™ technology.



# STIHL®

# 329<sup>95</sup>

## MM 55 STIHL Yard Boss

Versatile cultivator! Aggressive tine design, great for gardening and working in flower beds. Lightweight and powerful. Full line of accessories available.

# 29<sup>99</sup>

reg. 59.99  
Wheel Kit with  
purchase of  
MM55 Yard Boss

SAVE  
50%



# 149<sup>95</sup>

## BG 55 Blower

Makes cleanup work much easier. Primer bulb and throttle lock ensure fast starts. Reliable starting with low pull force. Two-stage air filter is easy to remove and replace. Round nozzle for increased air volume. Two-ringed piston for extended life.

# 179<sup>95</sup>

## MS 170 16-In. Chain Saw

Features Quickstop® inertia chain brake, Master Control Lever™, anti-vibration system, easy-off filter cover and view-through oil and gas tanks.



# 299<sup>95</sup>

## HS 45 18-In. Hedge Trimmer

High-torque engine adds power without weight. Double-sided blades with integrated cutter guard. Features a heavy-duty gearbox, a large front handle for multi-position cutting. Blade lock for starting and moving from one plant to another.



Double limited warranty protection applies to STIHL gasoline-powered products purchased for personal non-income producing, family and household purposes only. At the time of your equipment purchase, simply purchase a 6-pack of STIHL HP Ultra engine oil or 6 32-oz. containers of STIHL MotoMix® premixed fuel to qualify for double the limited warranty coverage. STIHL HP Ultra provides the best engine oil for improved engine longevity. Restrictions may apply.



GC10 **True Value**  
Pricing and savings may vary by location.



**TORO**

**319<sup>00</sup>** sale price  
**-20<sup>00</sup>** instant rebate\*

**299<sup>00</sup>** FINAL PRICE

**22-In. Recycler® Mower**  
11-in. rear high wheel for uneven terrain. Variable speed, self-propel with front wheel drive makes it easier to maneuver tight spaces. Kohler auto choke, no need to prime or choke. 20371

\*\$20 instant in-store rebate.  
Consumer responsible for taxes.



**TORO**

**299<sup>00</sup>** sale price  
**-10<sup>00</sup>** instant rebate\*\*

**289<sup>00</sup>** FINAL PRICE

**22-In. Self-Propelled Toro Recycler® Lawn Mower**  
3-in-1 mowing system offers bagging, mulching and side discharge capabilities. 149cc Kohler® OHV with auto choke. 20370

\*\*\$10 instant in-store rebate.  
Consumer responsible for taxes.



**TORO**

**549<sup>00</sup>** sale price  
**-50<sup>00</sup>** instant rebate†

**499<sup>00</sup>** FINAL PRICE

**21-In. Personal Pace® Recoil Start Mower**  
Rear bag/mulcher/side discharge. Toro premium OHV engine with auto-choke. 5-year warranty. 20381

†\$50 instant in-store rebate.  
Consumer responsible for taxes.

### The Arthur's Advantage

On any TORO lawnmower:

- FREE assembly
- FREE local delivery
- Gas and oil included
- FREE warranty registration



**TORO**

**\$379**

**22-In. Personal Pace® Recoil Start Mower**  
Self-propel mower automatically adjusts to your walking speed. Bag on Demand allows you to switch from mulching to bagging in seconds while leaving the bag on the mower. 159cc Toro TXP OHV engine with auto choke. 20372

**22-In. Personal Pace® Electric Start Mower \$419 20374**



**No interest  
if paid in full  
within 6 months  
when you use  
your True Value  
Discover card**

**Minimum \$299 purchase required.**  
Interest will be charged to your account (at the standard, variable APR) from the purchase date if the purchase balance is not paid in full within the promotional period or if you make a late payment. Any qualifying purchase must be made at True Value® and affiliated retailers. See Credit Card Agreement for details. Valid 4/1/14 – 5/15/14 only. Discover® and the Discover acceptance mark are service marks used by Comenity Capital Bank under license from Discover Financial Services.

**\$419**

**21-In. Personal Pace® SpinStop™ Mower**  
SpinStop™ Blade Stop System allows you to step away from the mower without having to restart. 159cc Toro TXP OHV engine. Bag on Demand allows you to switch from mulching to bagging. 20373





Since 1907

*Arthur's*

**True Value Hardware**

6471 West Quaker Street

Orchard Park

662-2155

[www.arthurshardware.com](http://www.arthurshardware.com)

Open 7 days, Store Hours: M – F 8-8, Sat 8-6, Sun 10-4

## SERVICES

Window & Screen Repair  
Small Engine Repair  
Mower & Blower Repair  
Keys Duplicated  
Computer Paint Matching  
UPS Parcel Shipping  
Glass & Screen Cut  
Catalog Ordering  
Free Delivery  
Propane Cylinder Exchange  
Sharpening

**Sale Ends May 25, 2014**

053AST-1A

*True Value*

**BARGAINS  
of the MONTH**

**5<sup>99</sup>** sale price  
**-4<sup>00</sup>** mail-in rebate\*

**1<sup>99</sup>**  
FINAL PRICE

**Cu.-Ft. Potting Mix**  
Enriched with Miracle-Gro  
liquid plant food.  
L 462 572 B65

\*Limit 2 per household.  
Consumer responsible for taxes.



YOUR CHOICE

**15<sup>99</sup>**  
reg. 19.99

**RealComfort®**  
**Adirondack Chairs**  
Comfortable lumbar  
and head support.  
Assorted colors.  
T 143 623, 624; 160 423,  
424; 172 337 24

**SAVE  
20%**



**7<sup>99</sup>**  
reg. 11.49

**16.60-Lb. Briquets**  
Ready faster and burns longer.  
T 123 116 1

**SAVE  
30%**



**GreenThumb**

**14<sup>99</sup>**  
reg. 25.99

**NeverKink 5/8-In. x 50-Ft.**  
**Heavy-Duty Garden Hose**  
Self-straightening technology  
guarantees no kinks or tangles.  
Lifetime warranty. L 784 470 B5

**SAVE  
42%**

LIFETIME  
WARRANTY



YOUR CHOICE

**5<sup>99</sup> SALE**  
with coupon  
**Solar Fluttering Butterfly  
& Hummingbird**  
Lifelike critters can be used  
in flower gardens or potted  
plants. T 140 091; 170 821 B24



See above for coupon  
expiration date. 2014 DM 053

SALE

**3<sup>99</sup>** with coupon  
**32-Oz. Concentrate  
Nectar**  
100% sucrose makes  
up to 5 quarts of nectar.  
L 119 397 B6



See above for coupon  
expiration date. 2014 DM 053

SALE

**2<sup>99</sup>** with coupon  
**32-Oz. Liquid Oil Soap**  
Natural cleaner for wood  
floors, paneling and other  
wood surfaces.  
W 510 255 B9



See above for coupon  
expiration date. 2014 DM 053

**For the store nearest you, call 1.800.6.HARDWARE or 1.800.642.7392**

©2014 by True Value® Company. Pricing and savings may vary by location. Prices advertised herein are True Value Company's suggested retail prices. Some of the products advertised for sale are offered at special reduced prices; others are at their regular everyday low prices. Individual retailers determine prices, terms and product assortment which may vary. All products advertised may not be available at every True Value retailer. Individual retailers reserve the right to limit quantities, correct pricing errors, obtain credit approval and accept any or all credit cards. Quantities may be limited if an advertised item is not available due to sales exceeding anticipated demand, space limitations, delivery problems or other circumstances beyond the individual retailer's control. Limited items may be ordered from a regional distribution warehouse. Some items may be prohibited for sale by state or local laws. Items may come unassembled. Manufacturers and models may vary by location. Prevailing taxes will be added to prices. Not responsible for omissions or typographical errors. All rebates subject to manufacturers' restrictions. See individual retailers for details. *Live green! Please recycle this circular if recycling is available in your community. Printed with soy ink.*

